



441 Page Street • P.O. Box 427 • Troy, North Carolina 27371-0427
(910) 576-6511 FAX (910) 576-2044

TO: Board of Education
FROM: Ben Grindstaff
DATE: October 1, 2012
SUBJ: 2011-2012 SAT and ACT Results

Attached you will find SAT and ACT results for the 2011-2012 school year. The SAT Reasoning Test takes about 3 hours and 45 minutes to complete and cost \$49. There is a fee waiver for students who qualify. When combining all three portions of the test (Writing, Critical Reading and Math), the total score range is from 600-2400. When combining only the Critical Reading and Math portions the total score range is from 400-1600. This year the ACT was provided to all grade 11 students and the cost was covered by the state. Now all grade 11 students are required to take the ACT. This test can be used for college admission. As long as the state requires this assessment it will be paid for by DPI.

I will be available to answer all questions you have.

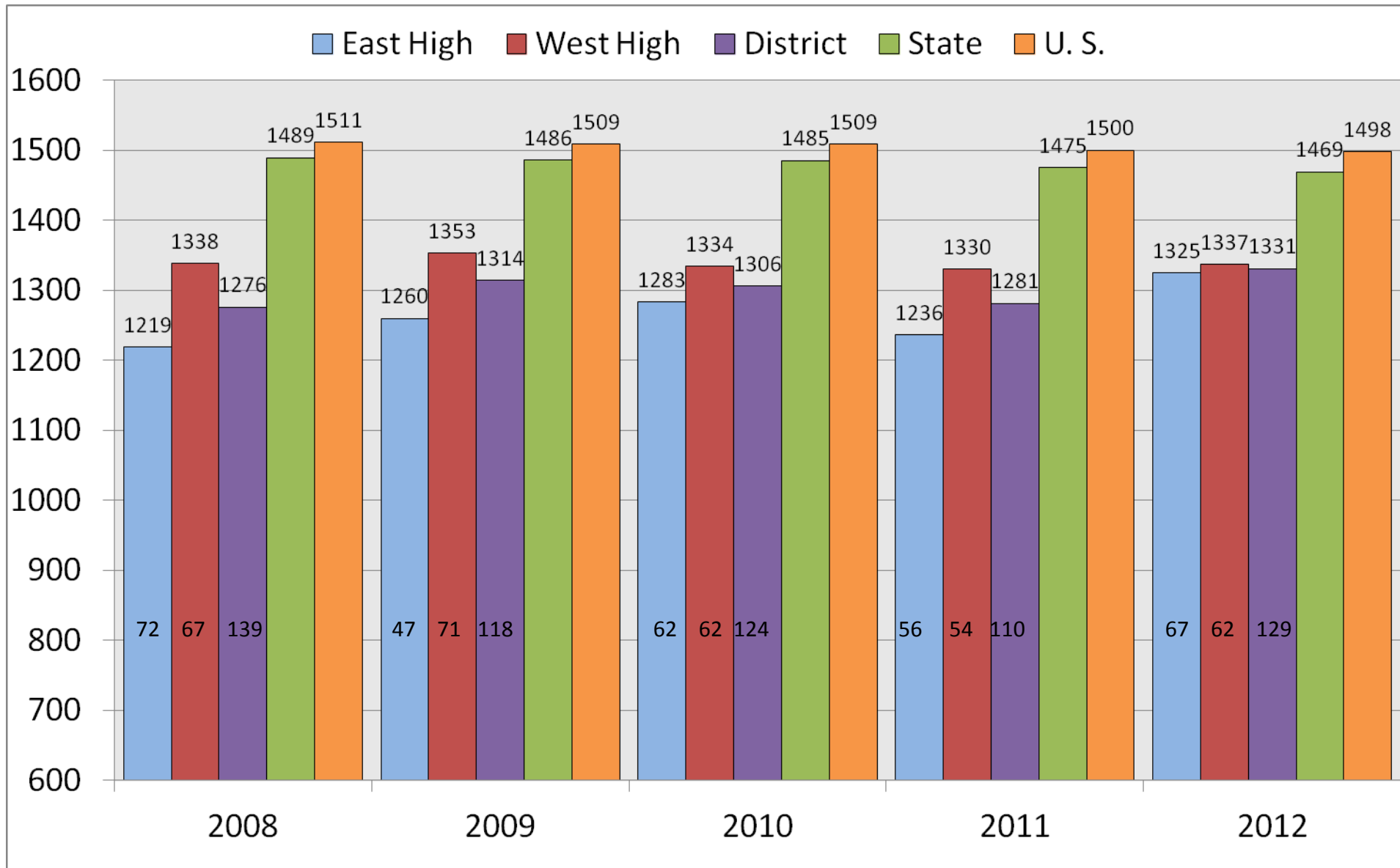


SAT and ACT REPORT

2008 – 2012 SAT REPORT

School, District, State, United States

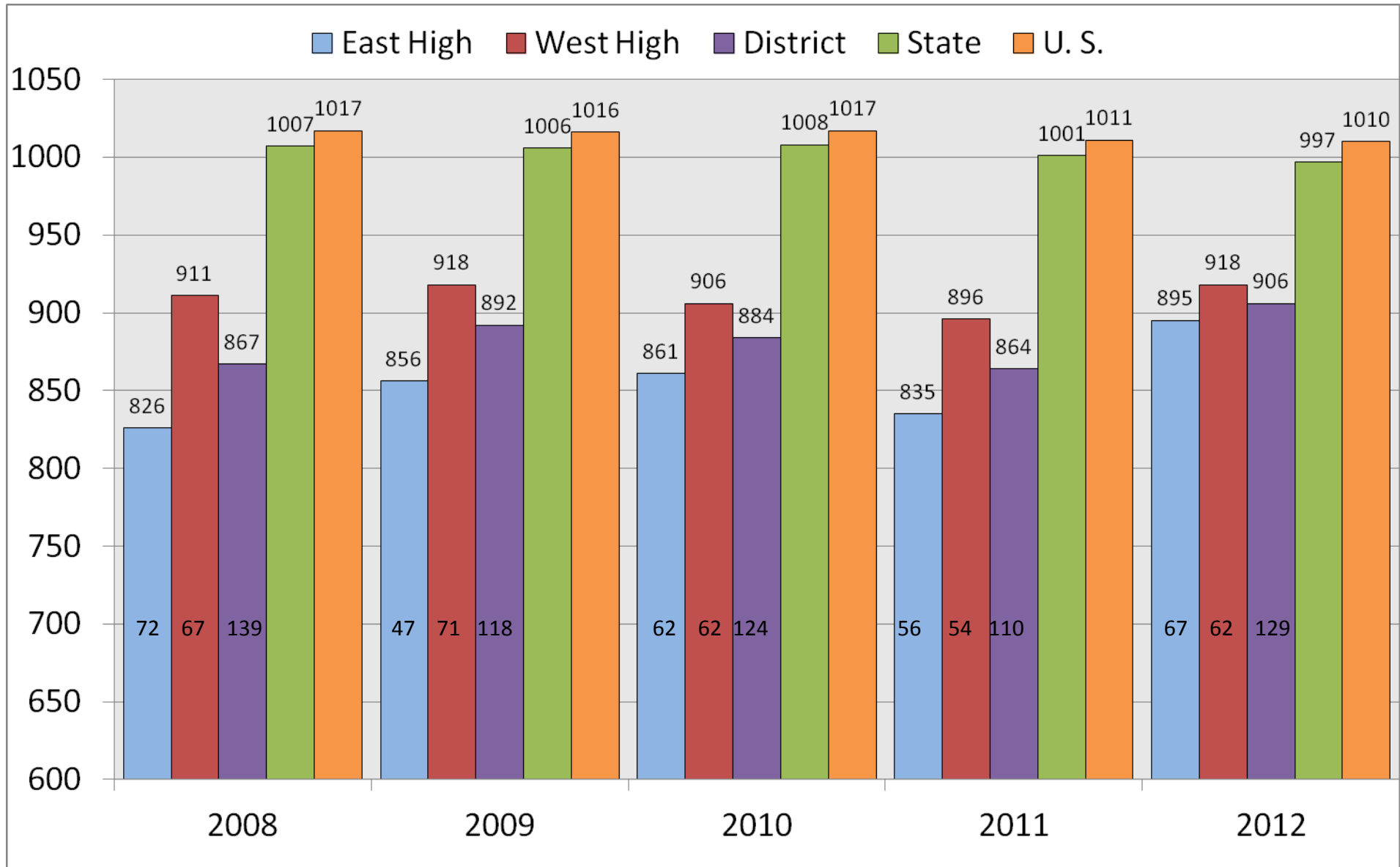
Math, Reading and Writing Combined



2008 – 2012 SAT REPORT

School, District, State, United States

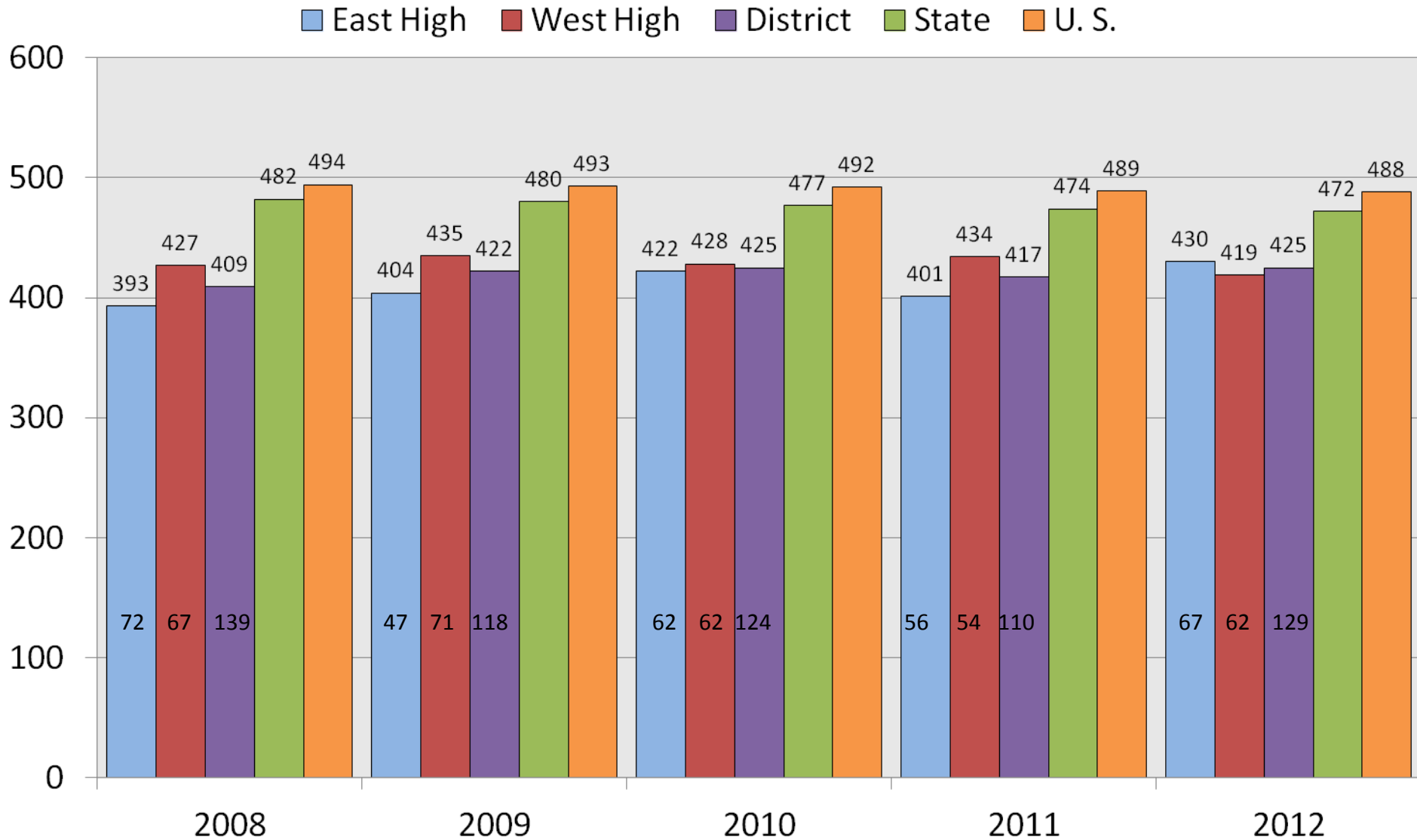
Math and Reading Combined



2008 – 2012 SAT REPORT

School, District, State, United States

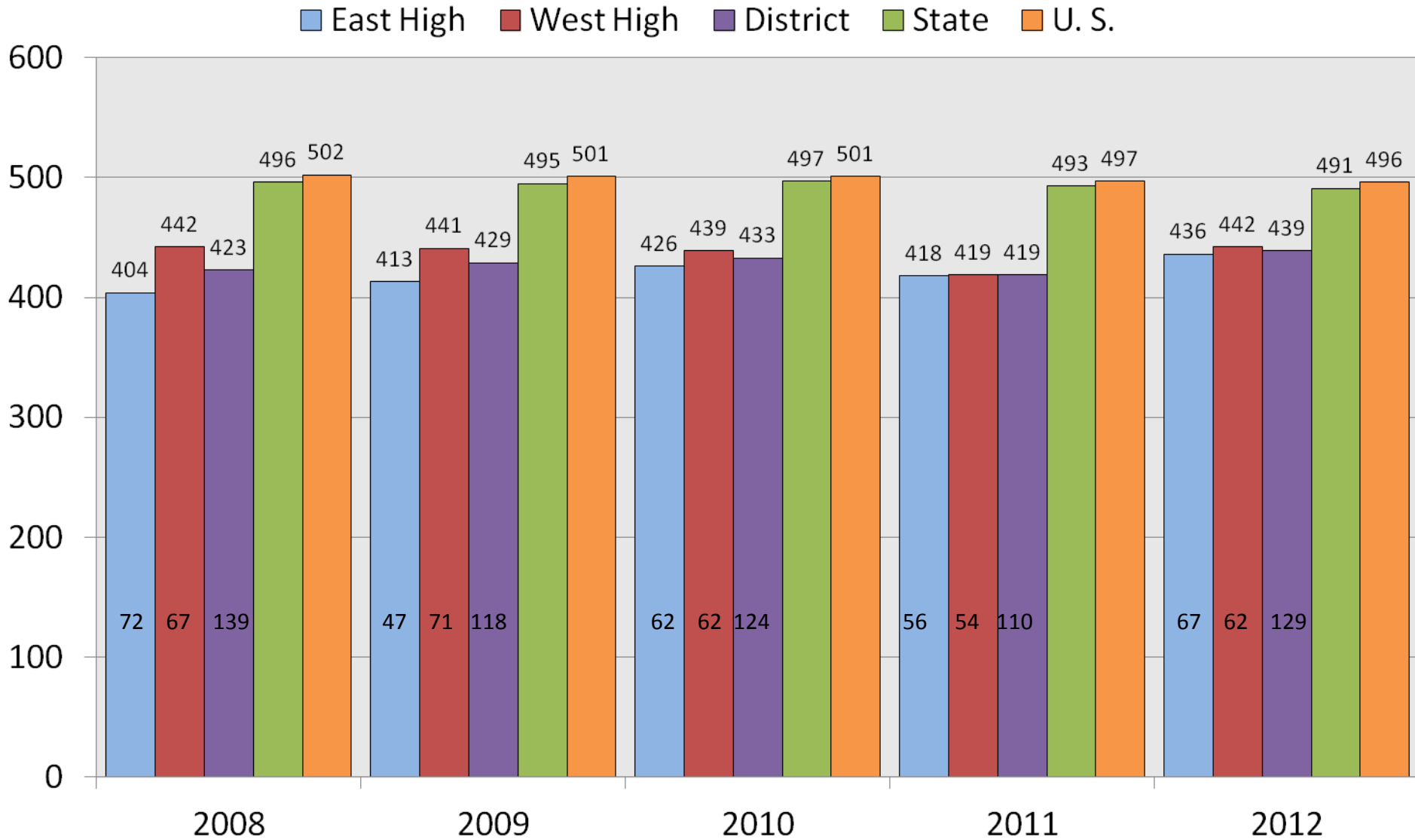
Writing



2008 – 2012 SAT REPORT

School, District, State, United States

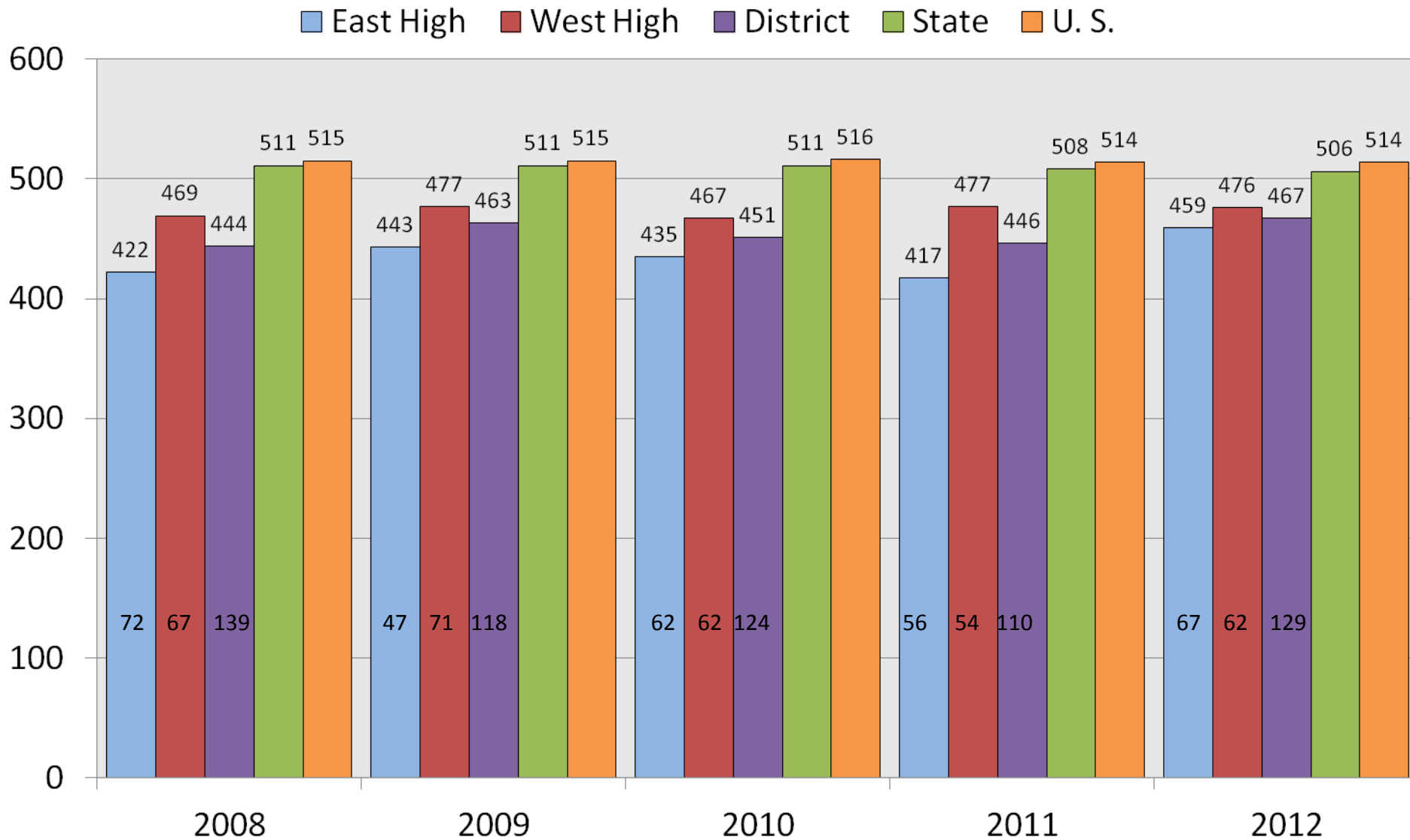
Critical Reading



2008 – 2012 SAT REPORT

School, District, State, United States

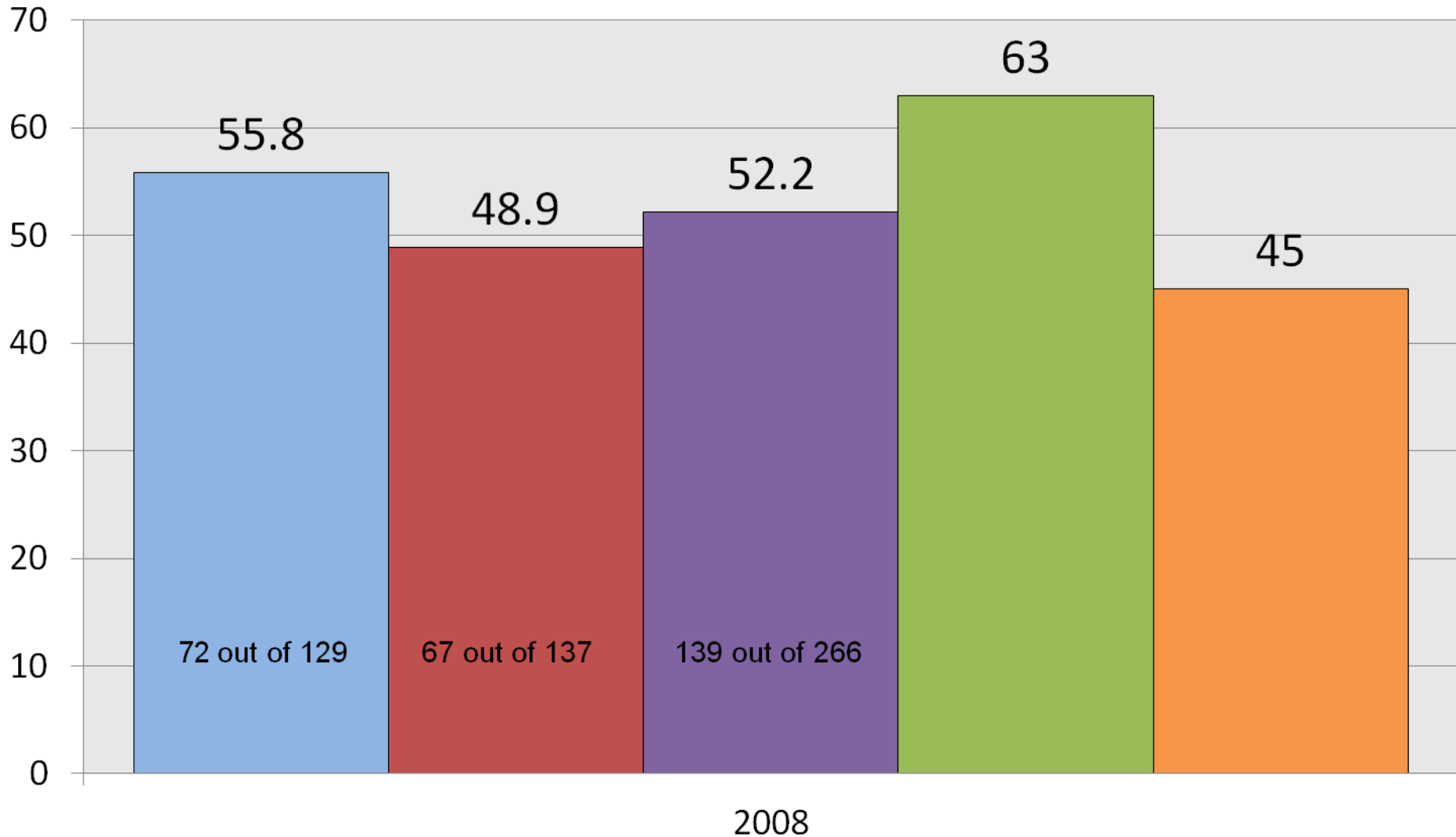
Math



2008 Graduating Seniors

Percent of Students Taking The SAT

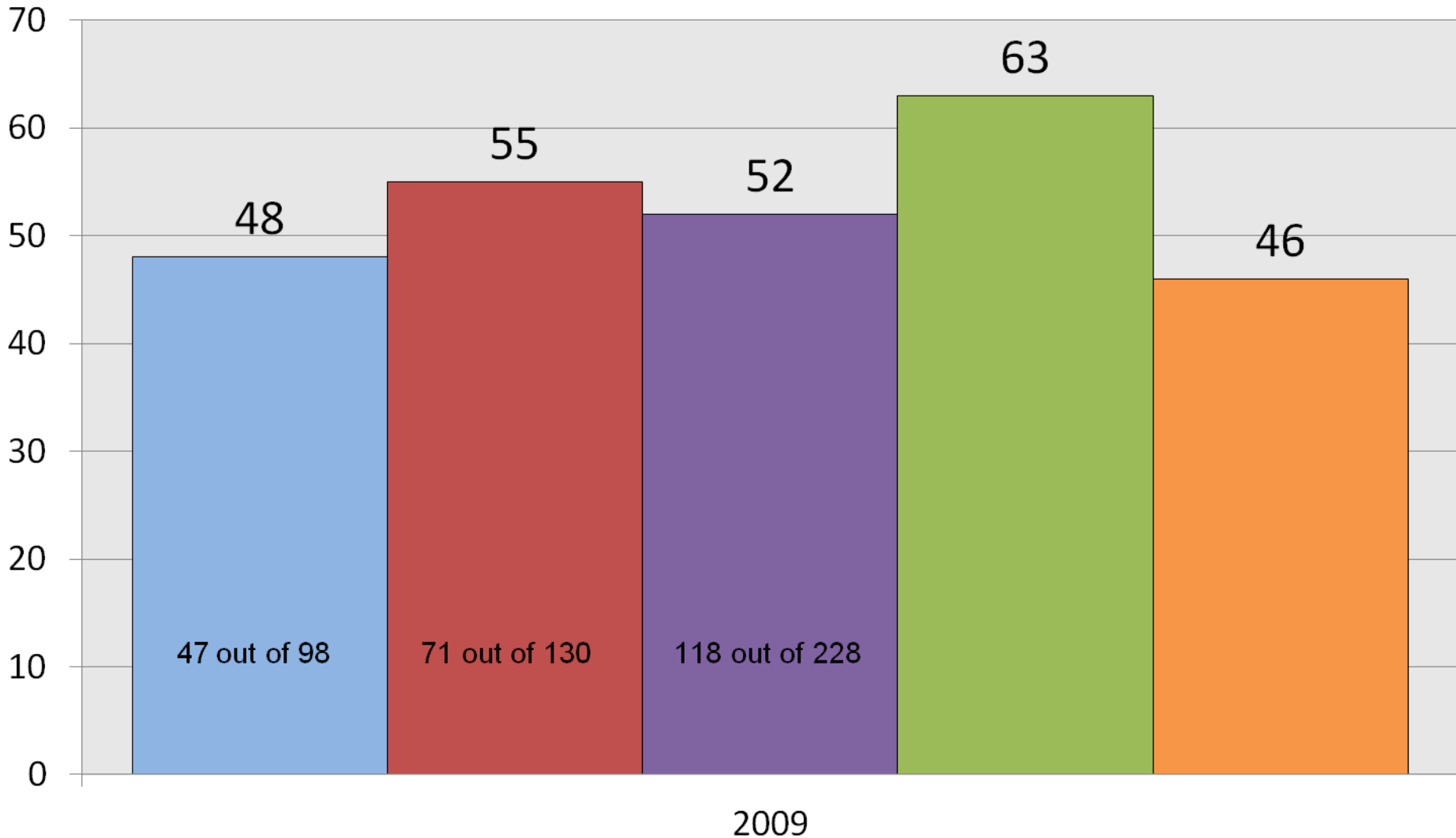
East High West High District State U. S.



2009 Graduating Seniors

Percent of Students Taking The SAT

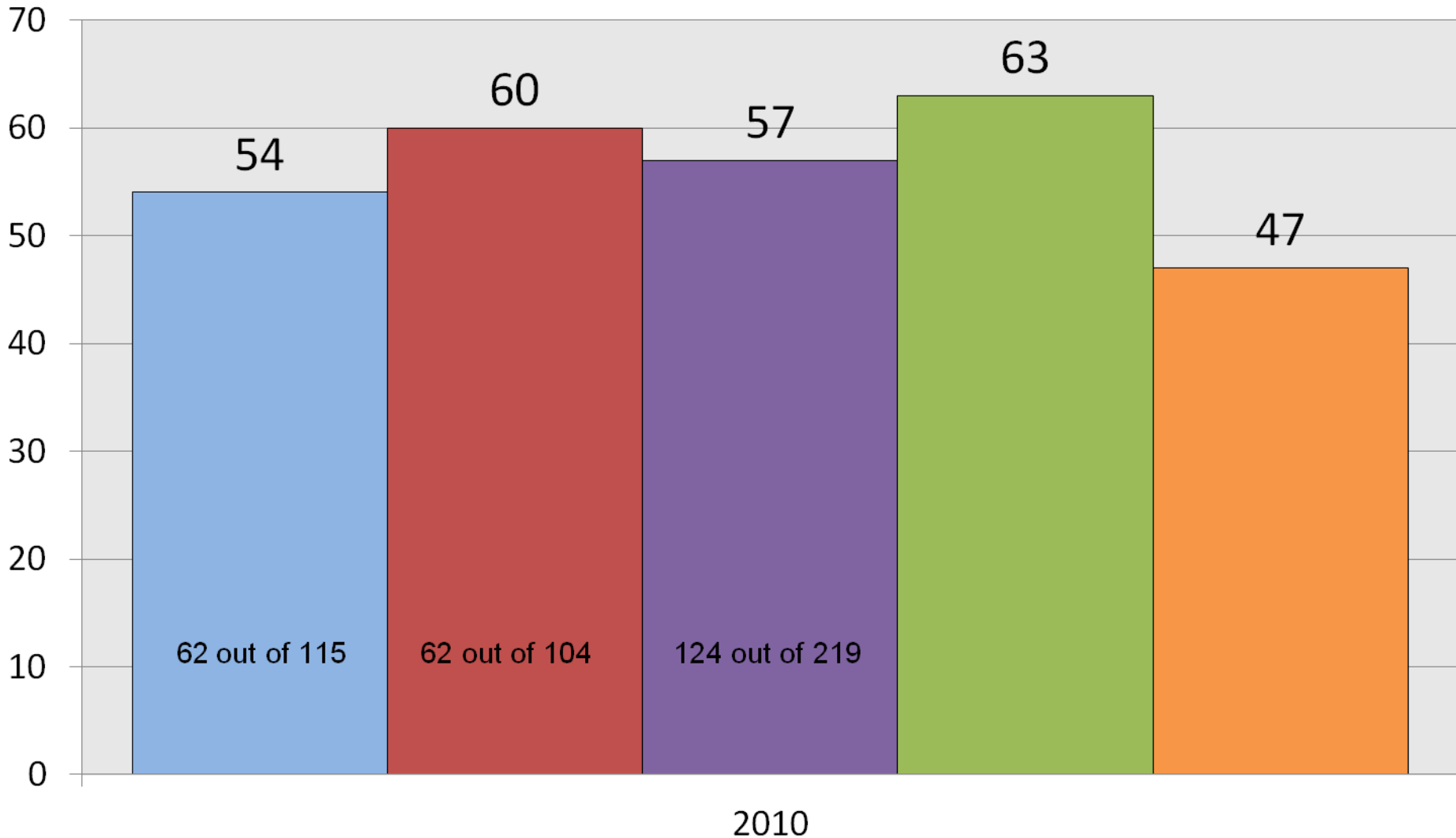
East High West High District State U. S.



2010 Graduating Seniors

Percent of Students Taking The SAT

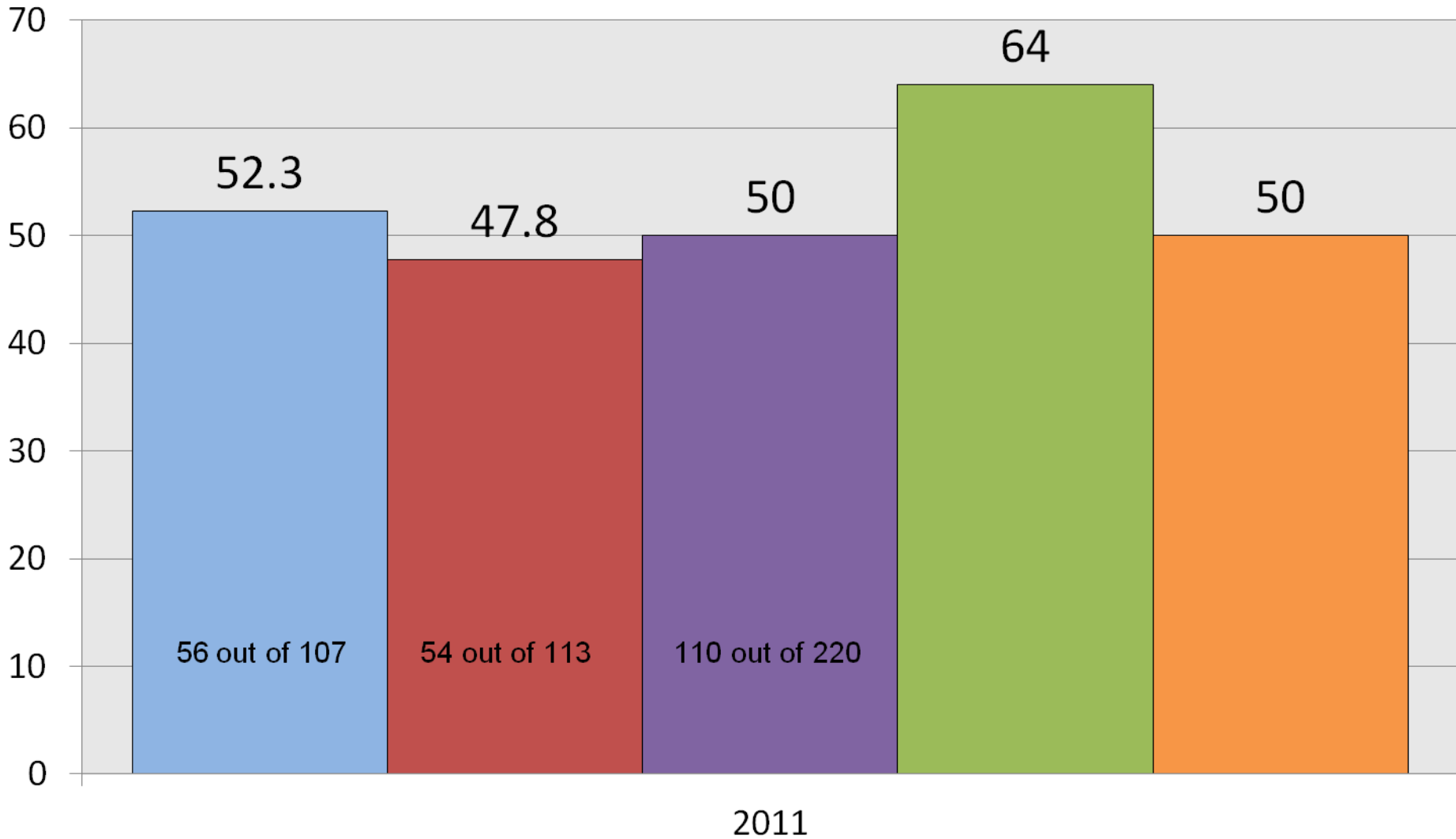
East High West High District State U. S.



2011 Graduating Seniors

Percent of Students Taking The SAT

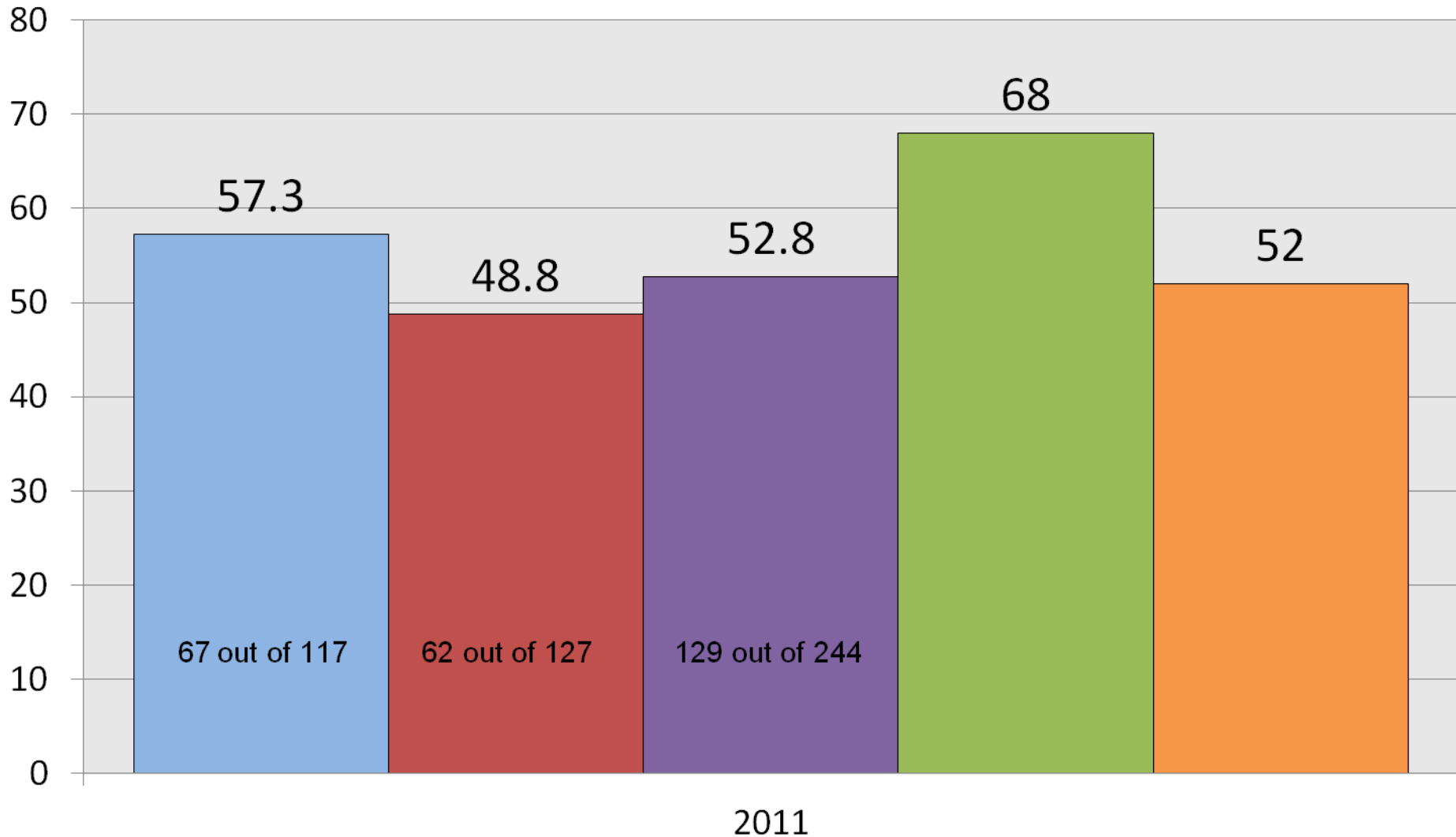
East High West High District State U. S.



2012 Graduating Seniors

Percent of Students Taking The SAT

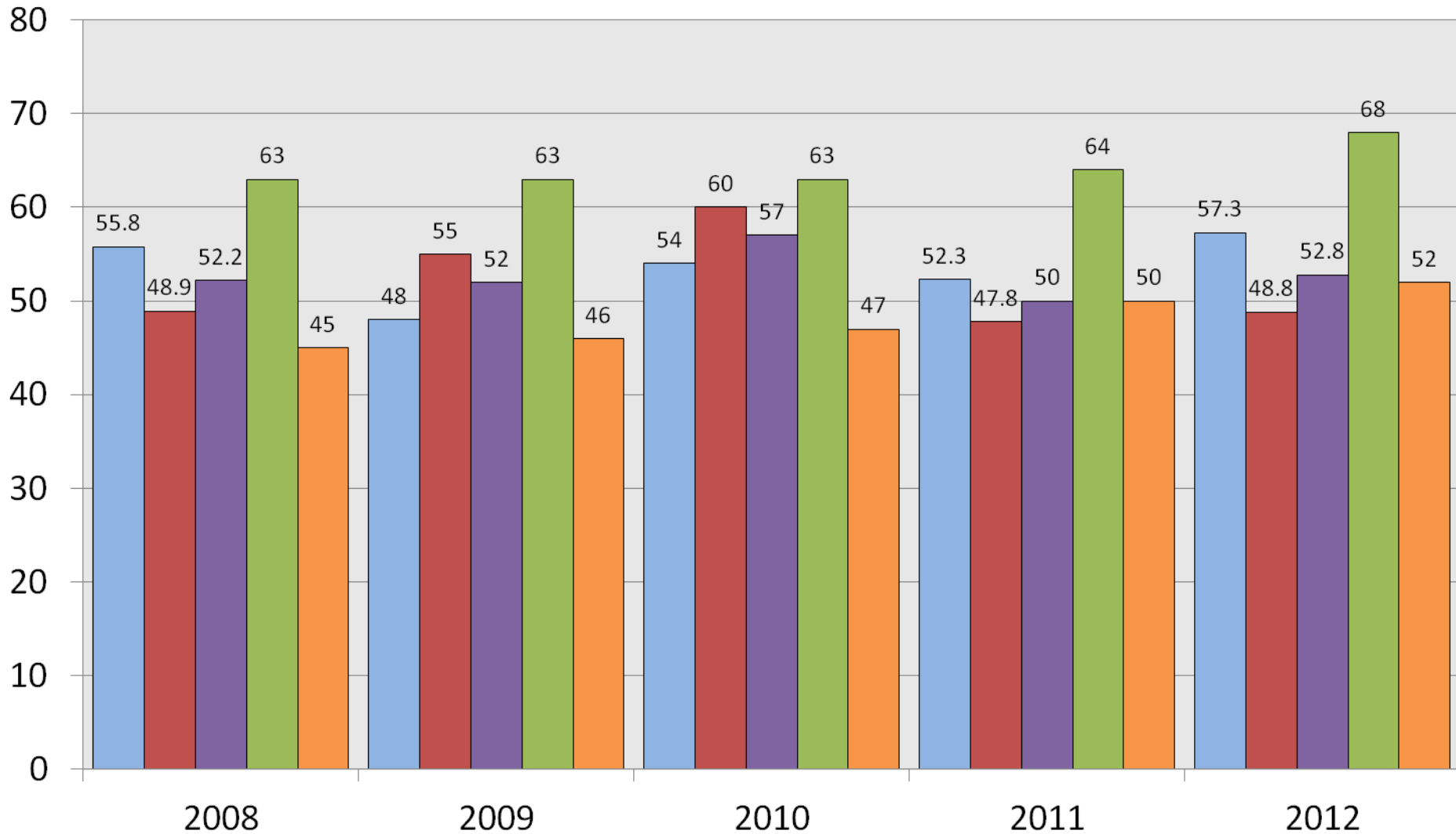
East High West High District State U. S.



2008– 2012 Graduating Seniors

Percent of Students Taking The SAT

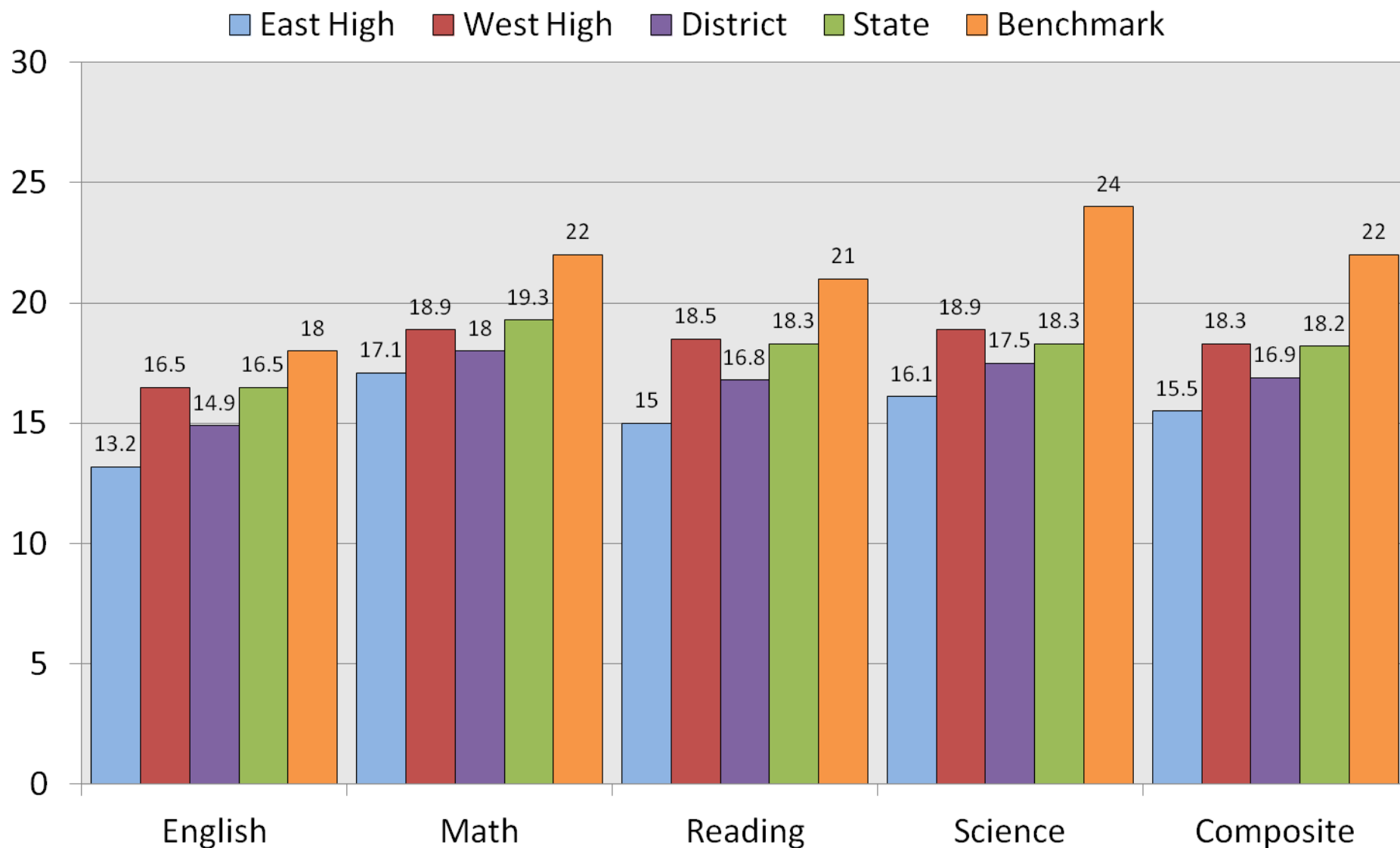
East High West High District State U. S.

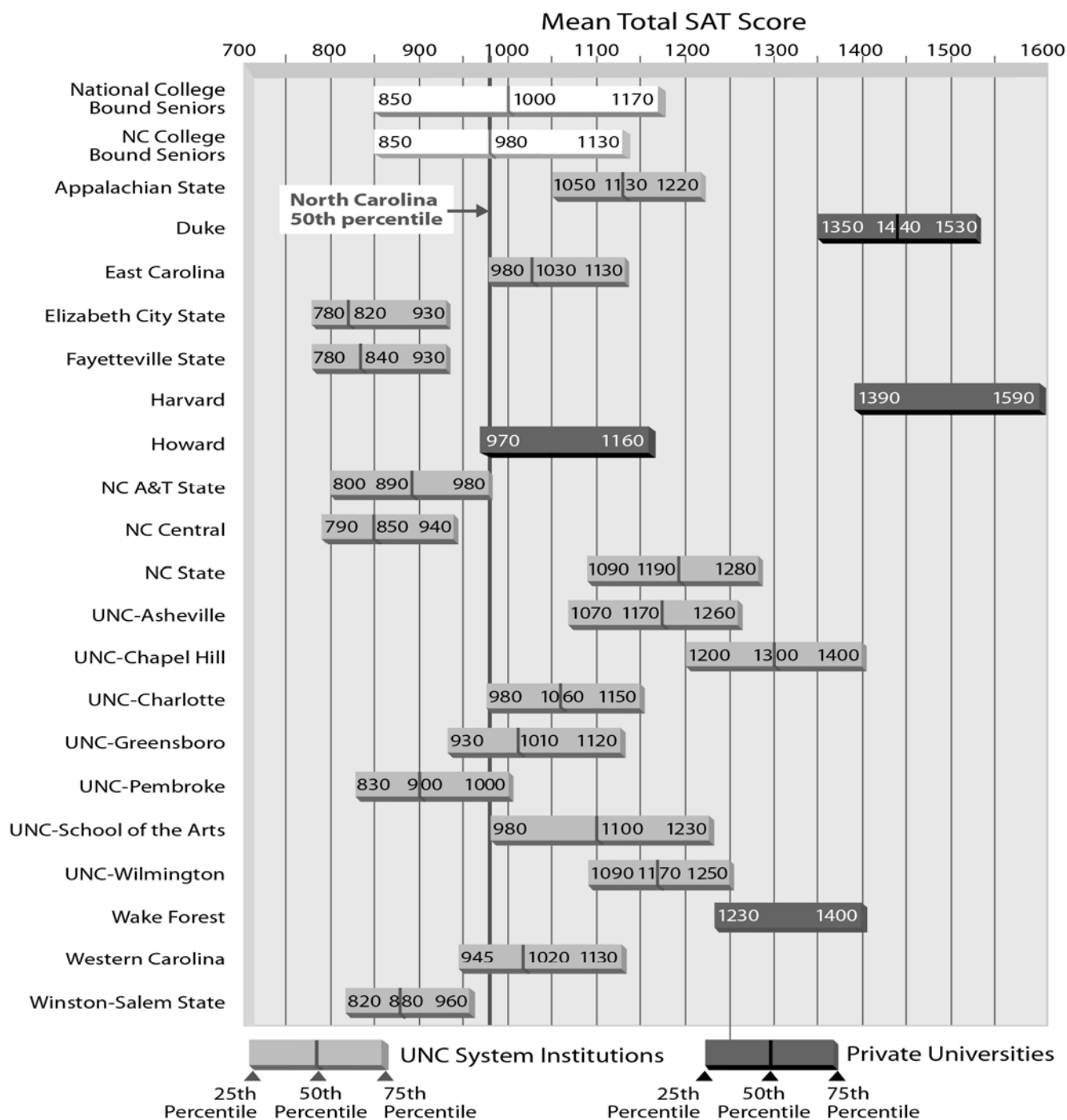


2012 ACT REPORT

School, District, State, Benchmark

Grade 11





Note: The 25th and 75th percentiles for Howard and Harvard University's entering freshmen taken from U. S. News and World Report (2012). *U. S. News Best Colleges: College 2013*.

Source: The College Board (2011) *Student Achievement Report 2011-12 - North Carolina Schools*. Atlanta: Southern Regional Office. The University of North Carolina (2011). *Averages and Quartiles of SAT Scores of Entering Freshmen in the University of North Carolina, Fall 2011*. Statistical Abstract of Higher Education in North Carolina, 2011-2012.

Figure 13. The 25th, 50th, and 75th Percentiles of SAT Total Scores (Critical Reading + Mathematics) for National College-Bound Seniors (2012), North Carolina's College-Bound Seniors (2011), Entering Freshmen at Institutions of the University of North Carolina System, and Selected Private Universities (Fall 2011).