

Montgomery County Schools

Dropout data for 2009-2010 school year

Presented by Edward Caldwell

Montgomery County Schools Graduation Coach

April 4, 2011

DROPOUT COUNTS AND RATES, 2009-10 General Findings

High schools in North Carolina reported a dropout rate of 3.75%, a substantial decrease from the 4.27% rate reported from the previous year.

Grades 9-12 reported 16,804 dropouts in 2009-2010, a decrease of 2,380 from the 19,184 total reported in 2008-09. There were decreases in 70% (81 of 115) of the Local Educational Agencies (LEAs).

Dropout Rates:

- o LEAs reporting the lowest dropout rates are Chapel Hill-Carrboro, Elkin City, Dare, Union, Newton Conover City, Cherokee, Gates, Iredell-Statesville, Tyrrell, and Mooresville City.
- o LEAs reporting the highest dropout rates are Hyde, Vance, Swain, Person, Bertie, Whiteville City, Kannapolis City, Hickory City, Sampson, and Rockingham.
- o The largest 3-year decreases in grades 9-12 dropout rates were seen in Graham, Gates, Clinton City, Jackson, and Burke.
- o LEAs with the largest 3-year rate increases were Bertie, Whiteville City, Alleghany, Hyde, and Washington.

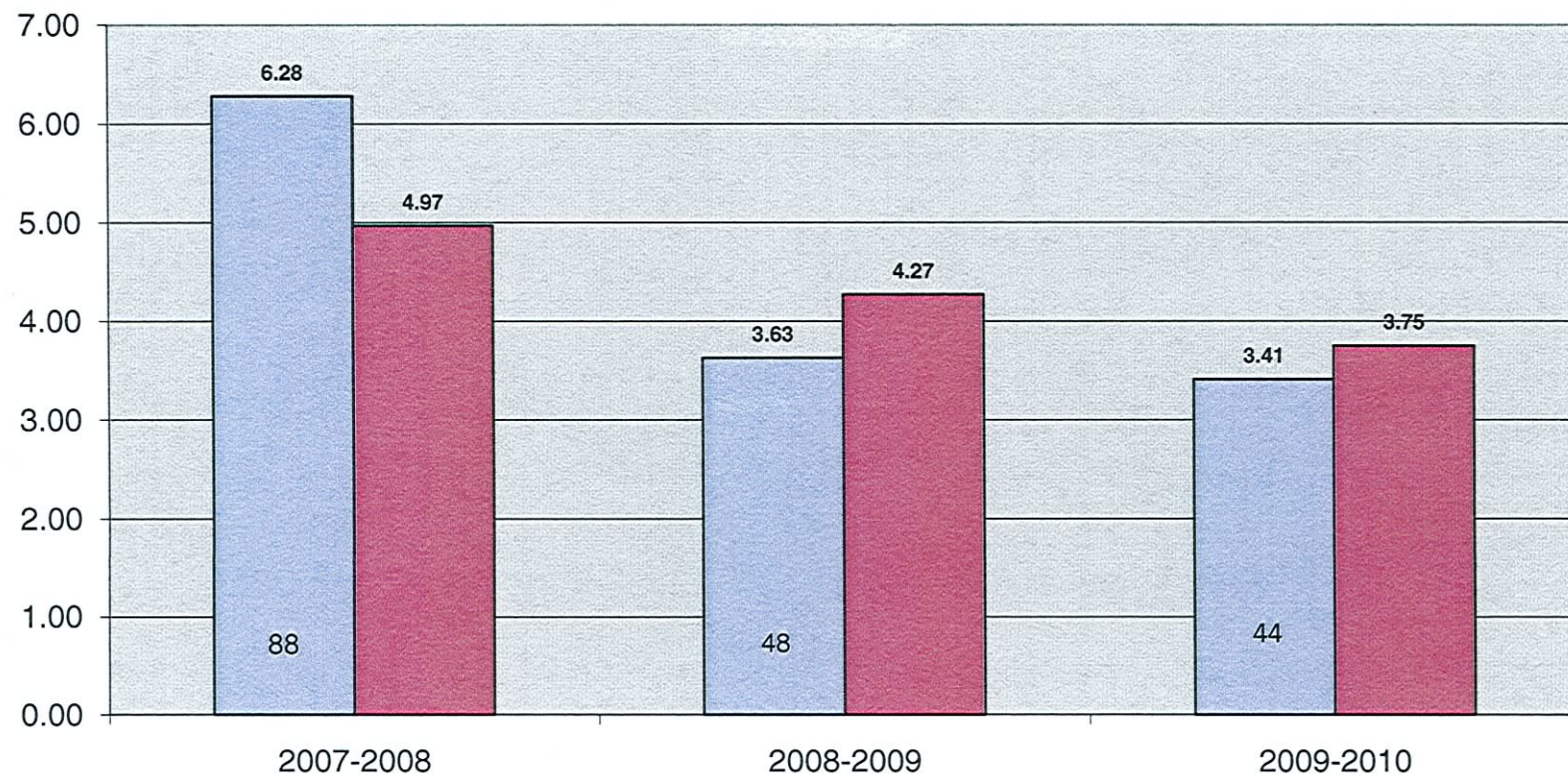
Dropout Count:

- o The 16,804 dropouts recorded in grades 9-12 represented a 12.4% decrease from the 19,184 reported in 2008-2009.
- o The largest 3-year decreases in dropout count for grades 9-12 are found in Charlotte-Mecklenburg, Forsyth, Gaston, Randolph, and Cabarrus.
- o LEAs with the largest 3-year dropout increases are Wayne, Bertie, Whiteville City, Alleghany, and Camden.

Gender, Race, and Age: All ethnic groups contributed to the decrease in the number of reported dropouts. The dropout rate for American Indian students declined for the sixth consecutive year. Males accounted for 59.4% of the reported dropouts. The numbers of high school students dropping out at all ages decreased, except those 20 years of age and older.

Reason Codes: For the sixth consecutive year, there is an increase in the "Enrollment in a Community College" dropout reason code. Attendance issues are again the reason most often noted for a reported dropout, accounting for 41.4% of all dropouts.

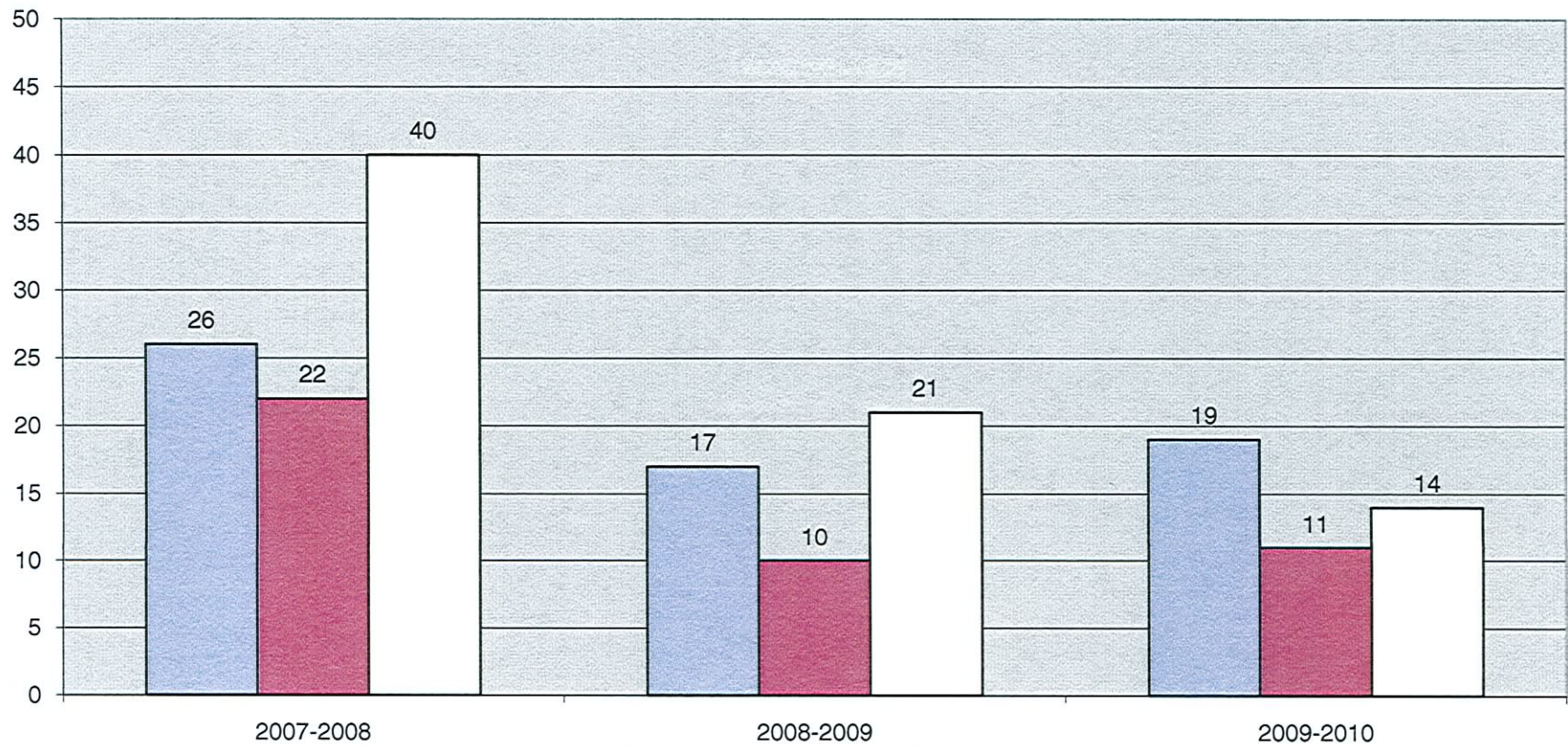
Montgomery County High Schools Dropout Percentages



□ Montgomery

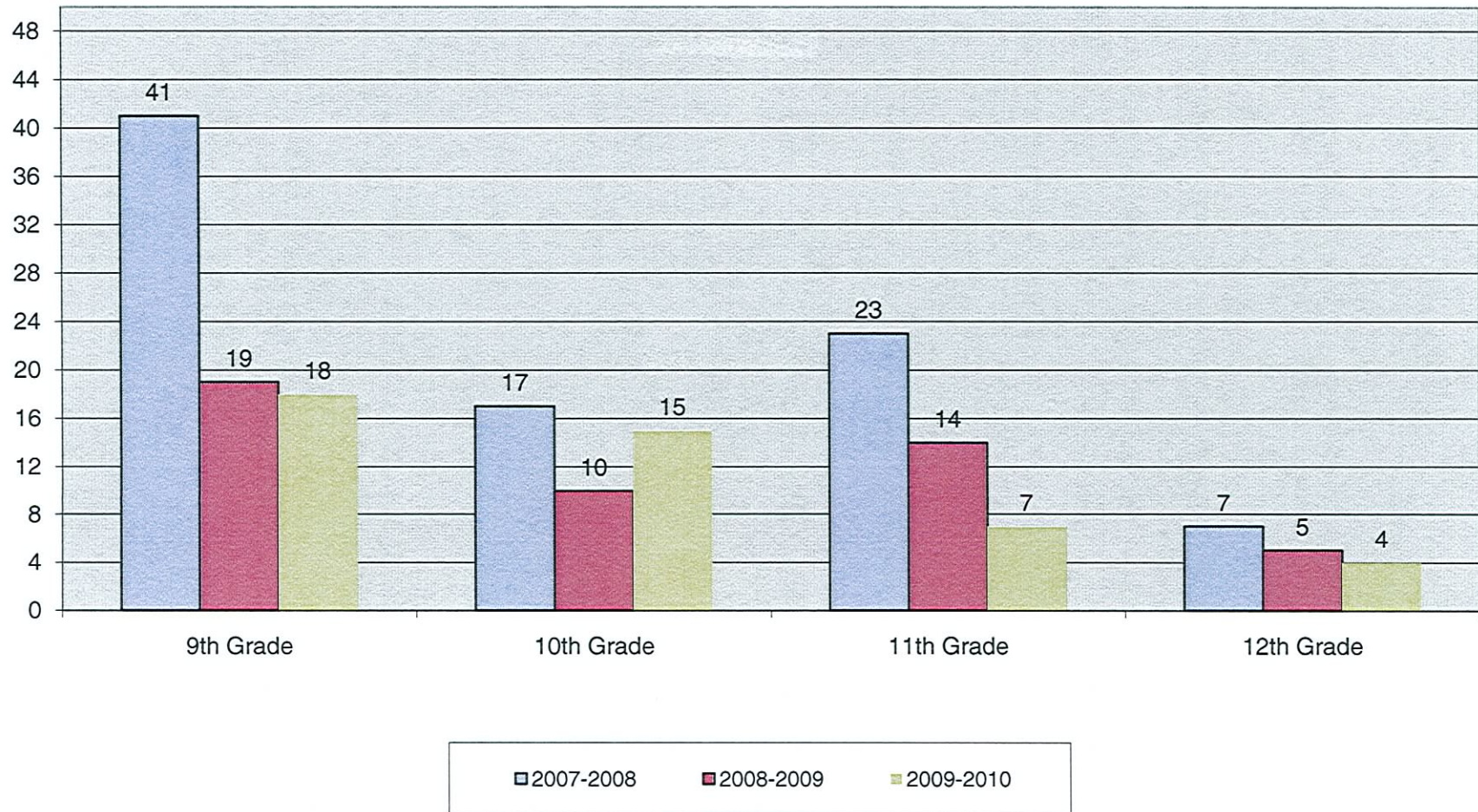
■ State

Montgomery County High Schools Dropout Comparison By School

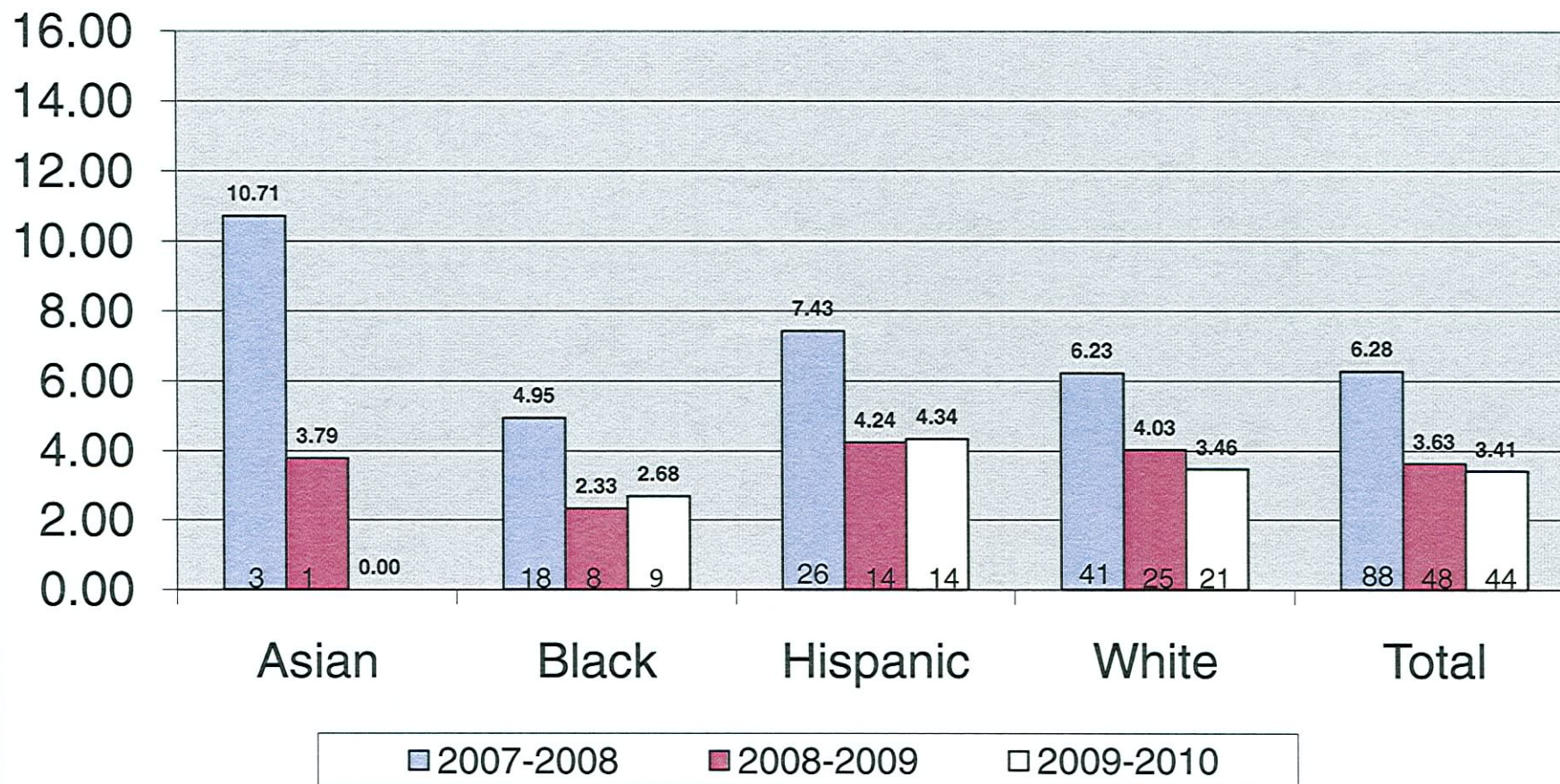


□ East High ■ MLA □ West High

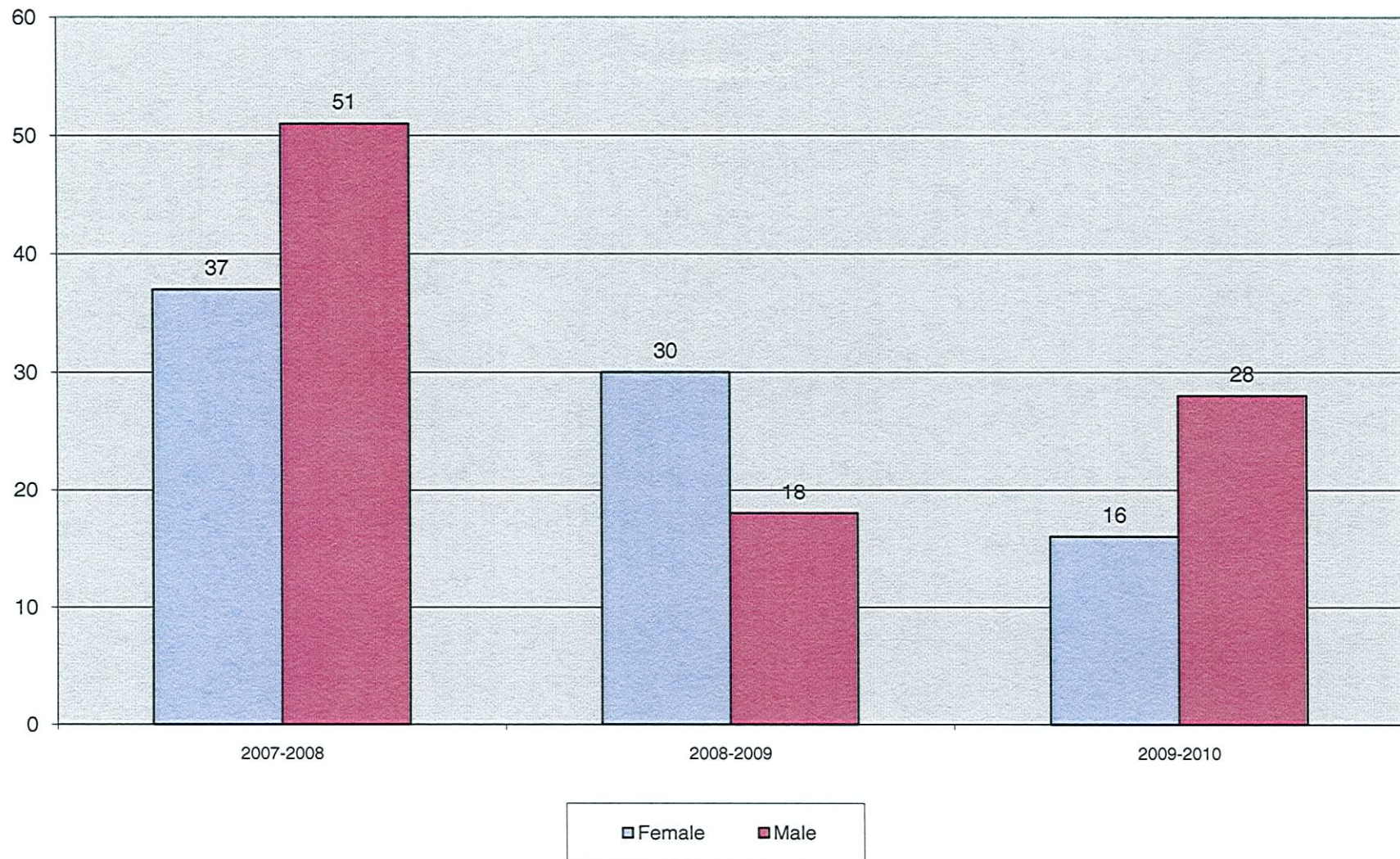
Montgomery County High Schools Dropout Comparison By Grade



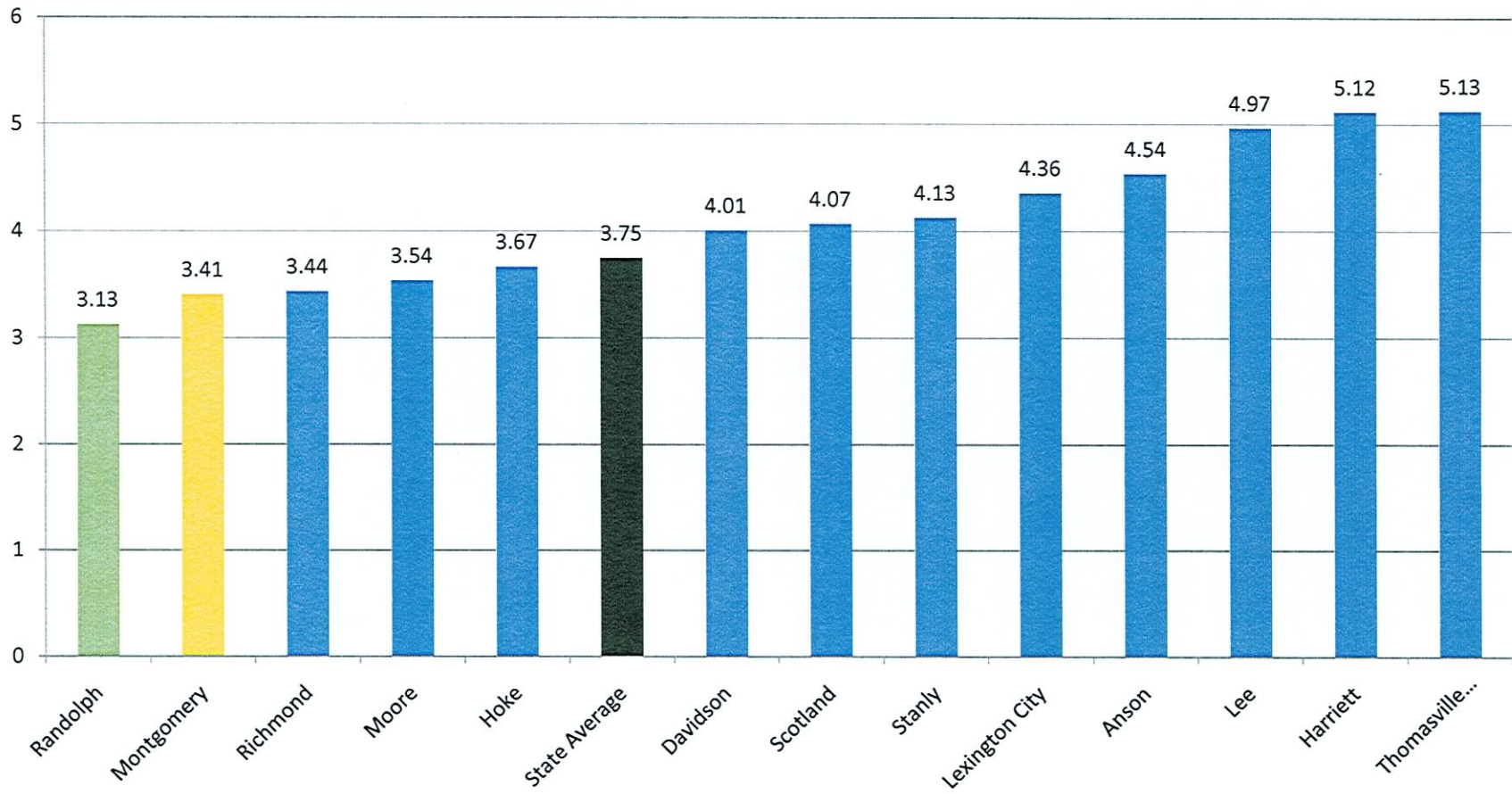
Montgomery County High Schools Dropout Percentage Comparison By Ethnicity



Montgomery County Schools Dropout Comparison By Gender



High Schools Dropout Percentage Comparison By County



Montgomery County Schools Dropout Event Reasons

